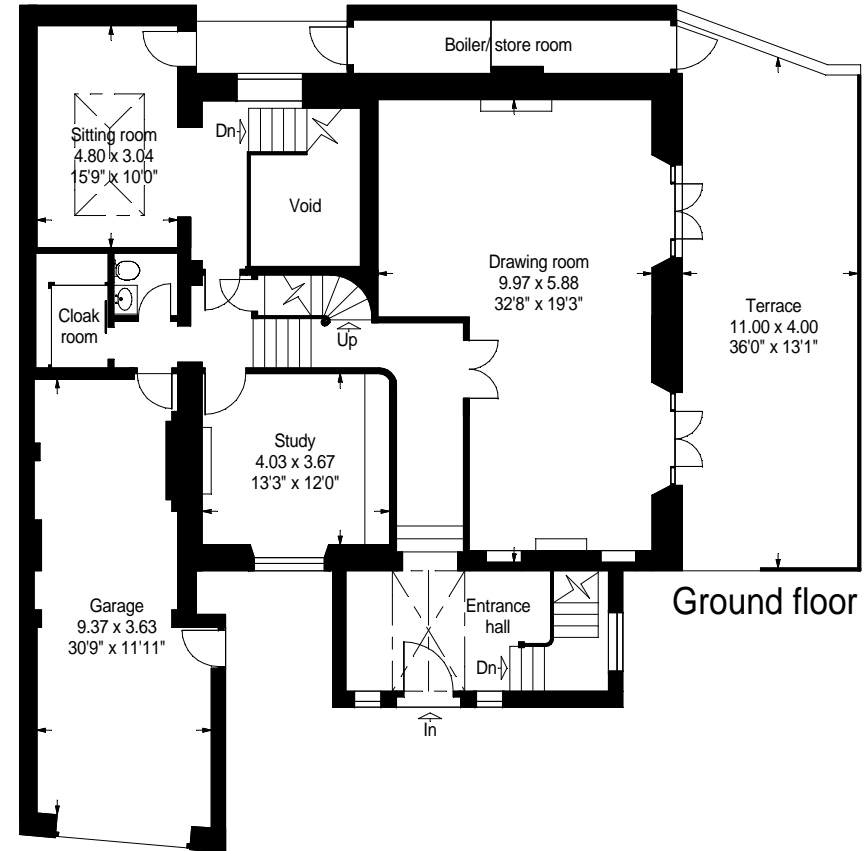
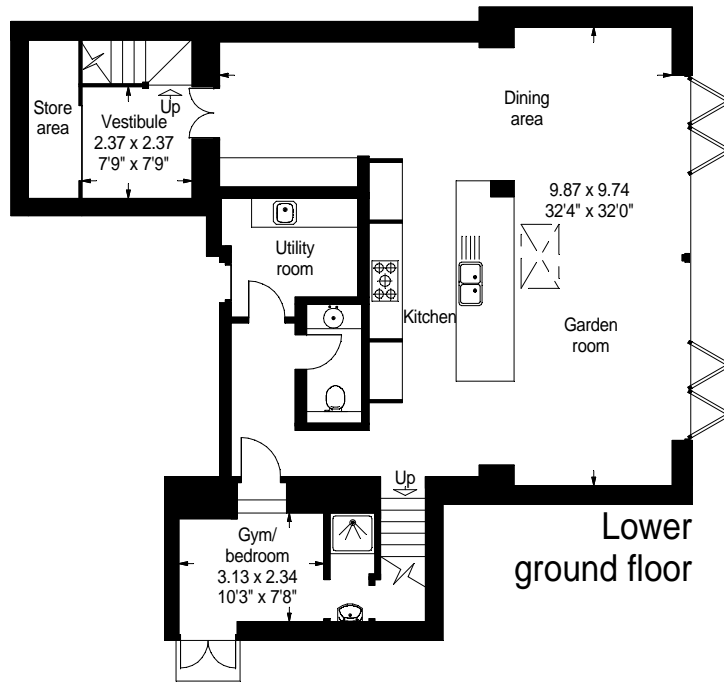


35 Greville Road, London NW6

Gross internal area (approx):
440 sq.mts. (4740 sq.ft.)
(including garage, not including boiler/store room)
For identification purposes only. Not to scale.

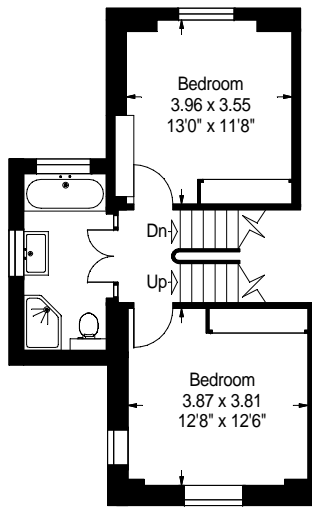
Pro plan e



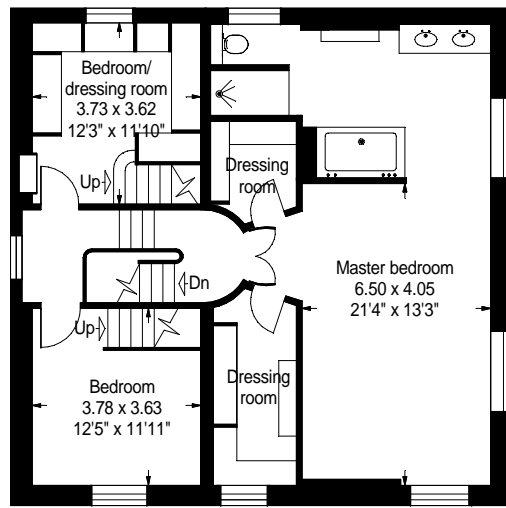
35 Greville Road, London NW6

For identification purposes only. Not to scale.

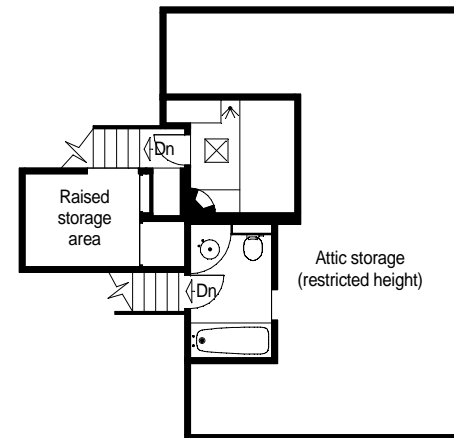
Pro plan ©



Mezzanine



First floor



Second floor

35 Greville Road, London NW6

For identification purposes only. Not to scale.

Pro plan ©

