

St John's Wood Park, London NW8

Approximate Gross Internal Area:

House - 248.3 sq.m. / 2673 sq.ft.

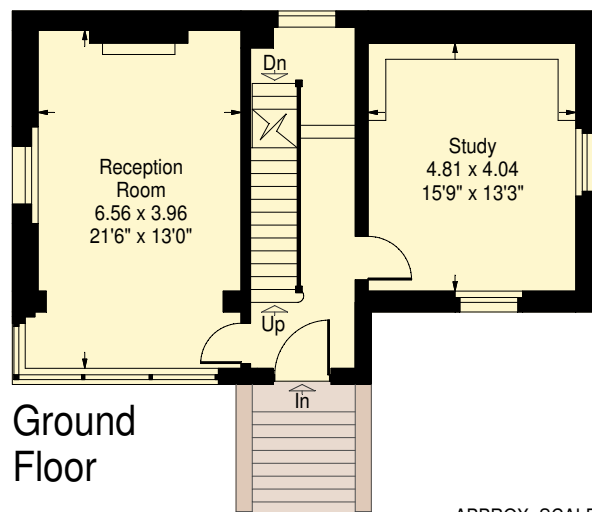
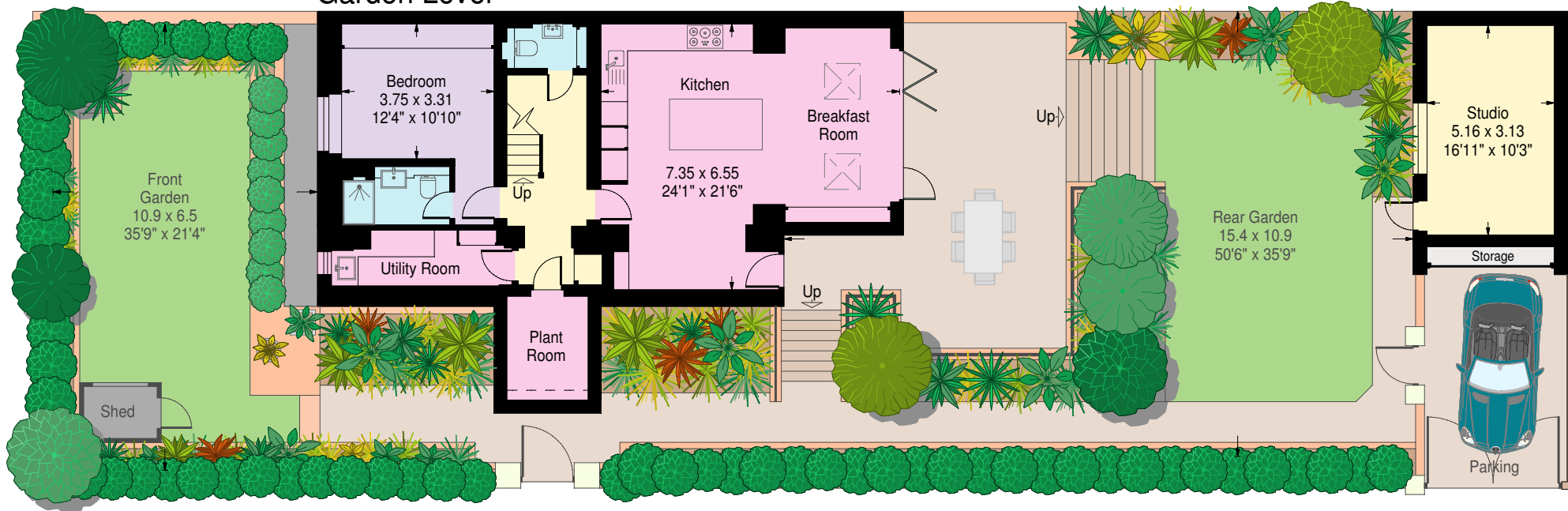
(including mezzanine and reduced height area,
below 1.5m - denoted with dashed line)

Studio, including storage - 18.2 sq.m. / 196 sq.ft.

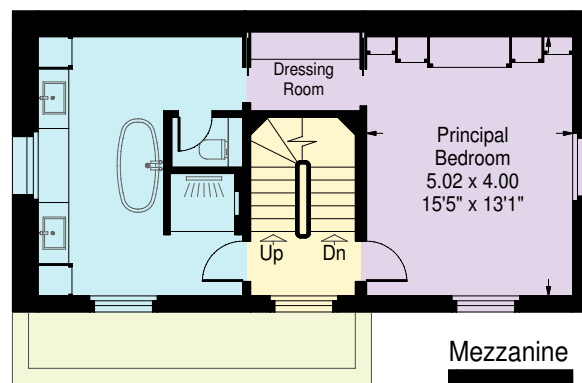
Total area - 266.5 sq.m. / 2869 sq.ft.



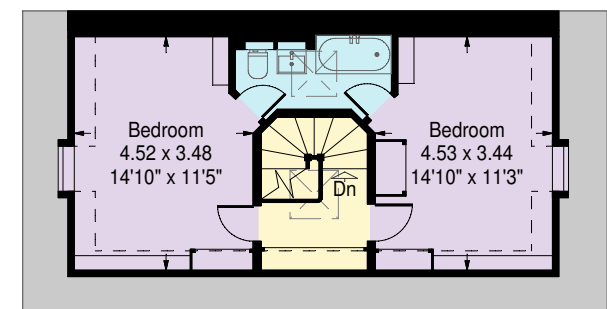
Garden Level



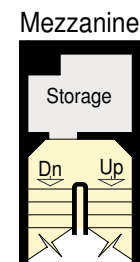
Ground Floor



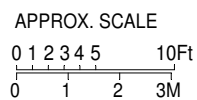
First Floor



Second Floor



Mezzanine



www.ProplanUK.co.uk
All measurements and figures are taken in accordance with RICS guidelines. This plan is for guidance only and must not be relied upon as a statement of fact.